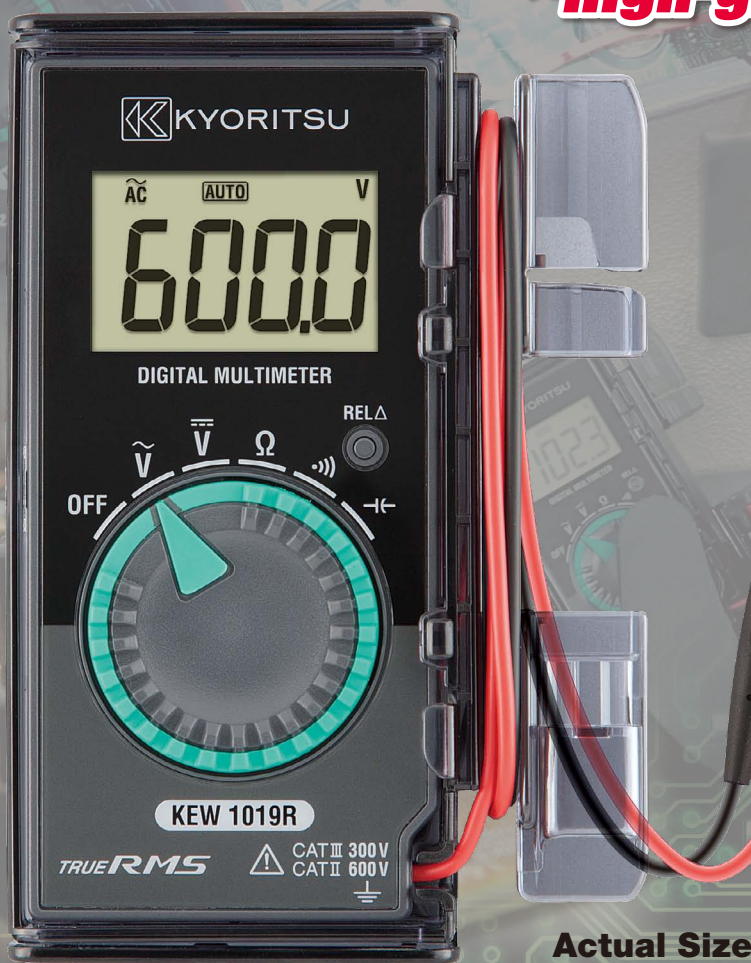


# CARD TYPE DIGITAL MULTIMETER KEW 1019R

**Small but versatile**  
*~High-grade card type tester~*



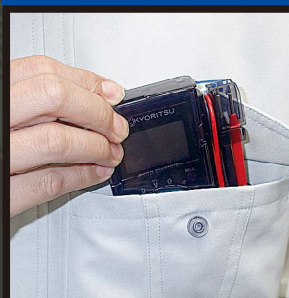
**TRUE RMS**

- **Elegant shiny-black finish**
- **Comes with user-friendly Hard case**
- **Large Display**
- **Accurate reading with True-RMS technology**
- **Electronic protection (no fuse!) on ohm and continuity ranges**
- **Safety Standard IEC 61010-1/61010-031/61010-2-033 CAT III 300V / CAT II 600V**

**Easy to open**



**Small and compact**



**Detachable CAT III Cap**

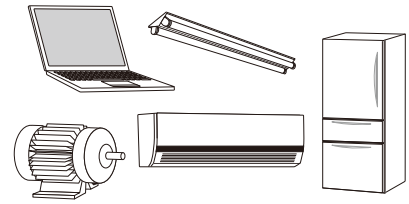


## KEW 1019R Specifications

DC V	600.0mV/6.000/60.00/600.0V (Input impedance: approx. 10M $\Omega$ ) ±0.8%rdg±5dgt (600.0mV/6.000/60.00V) ±1.0%rdg±5dgt (600.0V)
AC V (RMS)	6.000/60.00/600.0V (Input impedance: approx. 10M $\Omega$ ) ±1.3%rdg±5dgt (6.000/60.00V) (50/60Hz) ±1.7%rdg±5dgt (6.000/60.00V) (45 - 500Hz) ±1.6%rdg±5dgt (600.0V) (50/60Hz) ±2.0%rdg±5dgt (600.0V) (45 - 500Hz)
$\Omega$	600.0 $\Omega$ /6.000/60.00/600.0k $\Omega$ /6.000/40.00M $\Omega$ ±1.0%rdg±5dgt (600.0 $\Omega$ /6.000/60.00/600.0k $\Omega$ /6.000M $\Omega$ ) ±2.5%rdg±5dgt (40.00M $\Omega$ )
Continuity buzzer	600.0 $\Omega$ (Buzzer threshold value 60 $\Omega$ or less)
Capacitance	6.000/60.00/600.0nF/6.000/60.00/600.0 $\mu$ F ±3.5%rdg±50dgt (6.000nF) ±3.5%rdg±10dgt (60.00nF) ±3.5%rdg±5dgt (600.0nF/6.000/60.00 $\mu$ F) ±4.5%rdg±5dgt (600.0 $\mu$ F)
Applicable standards	IEC 61010-1 CAT III 300V, CAT II 600V Pollution degree 2 IEC 61010-2-033, IEC 61010-031, IEC 61326-2-2
Power source	CR2032(3V)x1
Continuous measuring time	Approx.120 hours Auto sleep: approx.15 minutes
Dimensions/Weight	126(L)x85(W)x18(D)mm / Approx.135g (including hard case, battery)
Accessories	9188 (Hard case), CR2032x1, Instruction manual

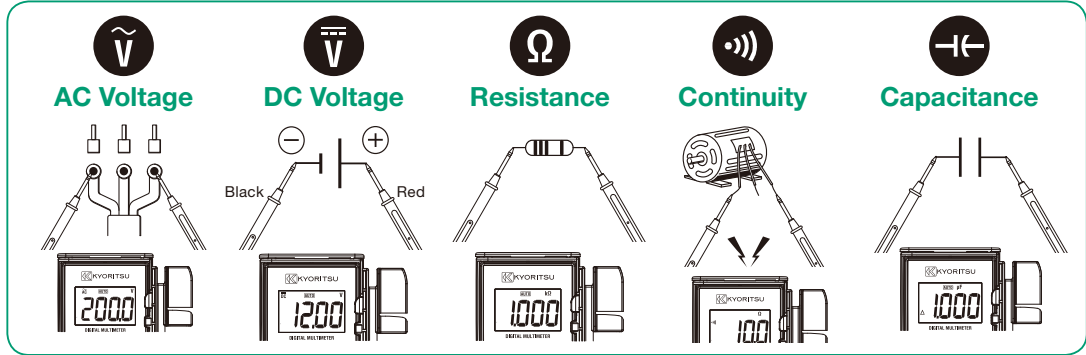
\*AC V: CF $\leq$ 3(50/60Hz) For non-sinusoidal waveforms, add ±0.5%rdg±5dgt, 900Vpeak

True RMS function for accurate readings also in presence of modern loads such as LED lamps, motor inverters, PCs, TVs, Air conditioners, etc.



Waveform	True RMS type <b>TRUE RMS</b>	Averaging value type
	✓ correct reading	✓ correct reading
	✓ correct reading	higher reading
	✓ correct reading	lower reading
	✓ correct reading	lower reading

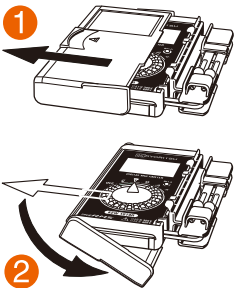
## Included Accessory



## User-friendly Hard case

### Easy to open

Fast to use, Fast to store



### Organized storage

Easy to store test-lead



### Probe holder

Easy to measurement



### Cap holder

To prevent loss



**! Safety Warnings :** Please read the "Safety Warnings" in the instruction manual supplied with the instrument thoroughly and completely for correct use. Failure to follow the safety rules can cause fire, trouble, electrical shock, etc. Therefore, make sure to operate the instrument on a correct power supply and voltage rating marked on each instrument.

**COSINUS Messtechnik - Ihr Partner für Messlösung  
in allen elektrischen und physikalischen Anwendungen**

**COSINUS Messtechnik GmbH**

Rotwandweg 4

82024 Taufkirchen

Tel.: 089 / 66 55 94 - 0

Fax: 089 / 66 55 94 -30

[office@cosinus.de](mailto:office@cosinus.de)  
[www.cosinus.de](http://www.cosinus.de)